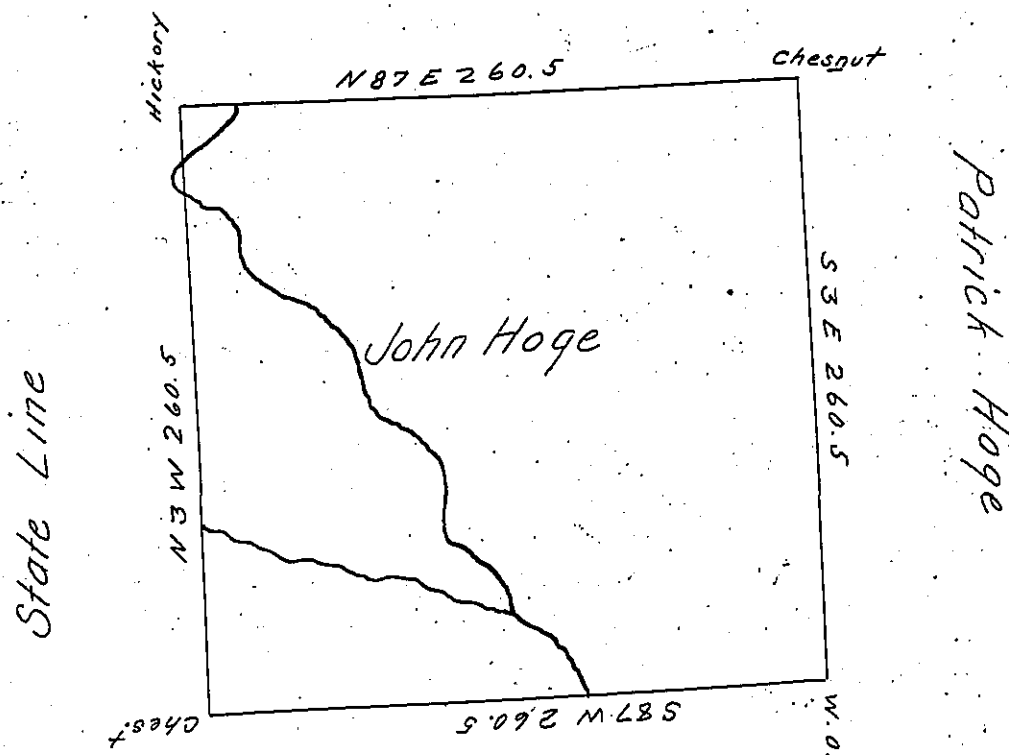


Donation near this



William Hoge

Situate On the Waters and West of the Chenango-branch of Beaver
 Creek adjoining or near to Land granted to the Pennsylvania Line as
 Donation in district N^o 3 Allegany County containing 400 A^s-16 P^s and
 Allowance. Survey'd the 16 May 1795 in Pursuance of a Warrant gran-
 ted John Hoge 21 April 1794.

Danl Brodhead Esq. S. G.

Ben. Stokely D. S.

IN TESTIMONY that the above is a copy of the original remaining on file in
 the Department of Internal Affairs of Pennsylvania, made
 conformably to an Act of Assembly approved the 16th day of
 February, 1833, I have hereunto set my Hand and caused
 the Seal of said Department to be affixed at Harrisburg,
 this third day of March 1905.

Loac R. Brown
 Secretary of Internal Affairs.